



elproLOG MONITOR

Getting Started

Version 3.6

The screenshot shows the elproLOG MONITOR software interface. The window title is "elproLOG MONITOR - [Group Store 1]". The menu bar includes "File", "Group", "Tools", "Window", and "Help". A toolbar contains icons for file operations and a "Show Alarm Window" button. The main area is a table with columns: "Logger", "S1", "S2", "S3", "S4", "S5", "S6", "S7", "S8", "D1", and "D2".

Logger	S1	S2	S3	S4	S5	S6	S7	S8	D1	D2
▶ Air Inlet ID: 557428	Production A, I 26.8 °C	Production A, I 46.3 %								
Production A, Shelf 1 ID: 12358	Production A, 41.91 °C	Production A, 52.22 %rF							Door open switch 0 open	
Production A, Shelf 2 ID: 7678	Production A, 21.8 °C	Production A, T 23.4 °C								

At the bottom of the window, there is a status bar with the following information:

- Remaining time: 00:00:26
- Cycle time: 00:01:00
- Waiting...
- Next autosave: 02.09.2008 14:00

Table of Contents

1. Introduction to elproLOG MONITOR	4
2. Basics	5
2.1 System requirements	5
2.2 Installation	5
3. Who To Start elproLOG MONITOR	6
4. Menus - Functions - Icons	8
4.1 Menus - Functions	8
4.2 Icons	9
5. Data Representation	10

Used symbols & designation key



Information



IMPORTANT INFORMATION OR WARNING



Reference to resuming chapter or document



In the interest of our customers, we reserve the right to make any changes resulting from technical advances. Therefore, schemes, descriptions and extent of delivery are subject to change without any notice!

This manual is valid as from software release 3.6x

1. Introduction to elproLOG MONITOR

elproLOG MONITOR software provides an interface for retrieving, displaying and automatic saving data from the datalogger network.

- Enables you to specify a data collection schedule for each group
- Displays and continually updates the last values for a group of dataloggers
- Automatic data saving into an mdf-file, readable by elproLOG ANALYZE software (21CFR11 compliant file)
- Provides alarm information of each individual device
- Provides several alarm handling and data recording features e.g. alarm log file



- To run the elproLOG MONITOR software successfully you first have to define a group of loggers that shall be monitored! This group definition has to be made with the elproLOG CONFIG software.
- For a sample file of an elproLOG CONFIG group file see: Program / elpro / elproLOG CONFIG / Samples / Group-Demo.gcf
- To make changes in the cfg-file active - restart elproLOG MONITOR
- The dataloggers ECOLOG-NET are not able to respond to multiple accesses at the same time. If you are going to use different elproLOG software products, you might get a communication error for cases where several applications access the datalogger at the same time!

2. Basics

2.1 System requirements

Windows 2000 SP4, XP or Vista
Pentium 1.5GHz
Memory 512 MB RAM
Hard disk space 150 MB
Monitor 800x600 Pixels

2.2 Installation

You will need your serial number to activate the software and to receive customer support; keep this document in a safe place where it can be referenced easily.



THIS SOFTWARE NEEDS LOCAL ADMINISTRATOR RIGHTS FOR THE INSTALLATION!

Support & Release Information

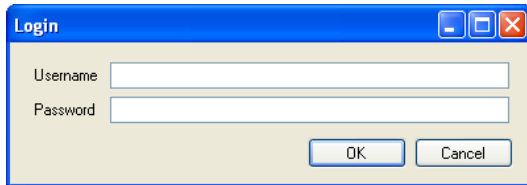


RedaMe file and SM3002E elproLOG MONITOR Operation manual


3. Who To Start elproLOG MONITOR

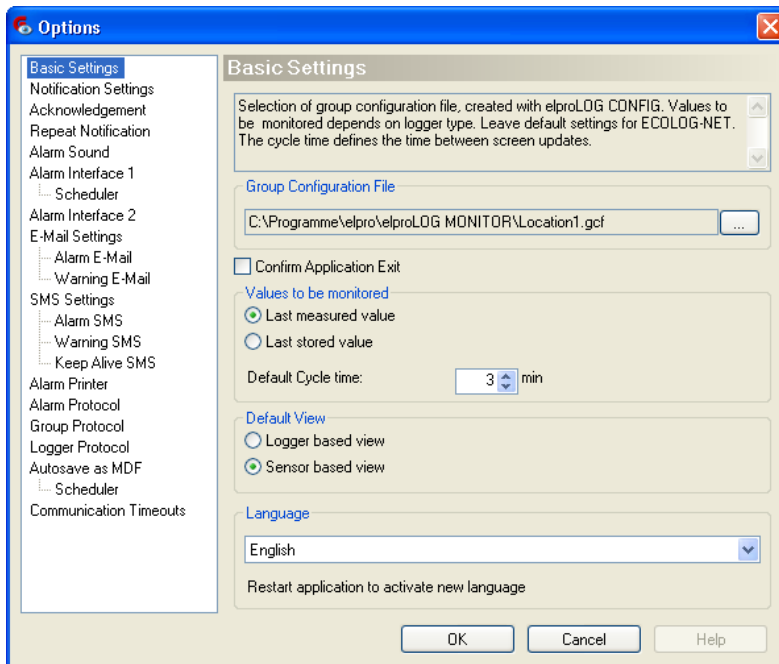
1. If elproLOG USER is installed, you are forced to identify yourself by your name and password


 SU3001E elproLOG USER Operation Manual

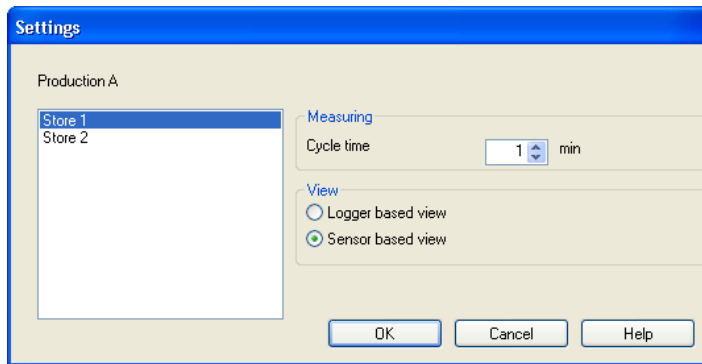


2. Select the prior created gcf-file (elproLOG CONFIG) of the location which should be monitored and define all monitoring parameters.

 SM3002E elproLOG MONITOR Operation Manual, chapter 4. Configuration



3. Setup a new monitoring group.  4. *Menus - Functions - Icons - File - New*



After the settings have been made, the elproLOG MONITOR software brings up the main window and starts automatically with the monitoring task.

4. Menus - Functions - Icons

The following functions are available in the elproLOG MONITOR software:

4.1 Menus - Functions

File



New

Open a new group which has to be monitored

Group

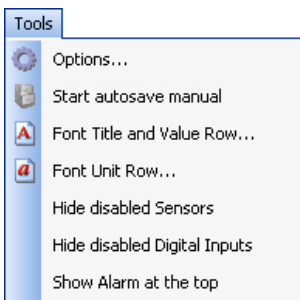


Settings

Used to change the monitored group and to define the cycle time for each defined group independently.

After a restart of the program, the last selected groups will be monitored automatically.

Tools



Options

This function is used for all possible program settings.

Start autosave manual

This function is used to perform an autosave as mdf-file right now

Font....

Use these settings to match the used fonts of the main window

Tools

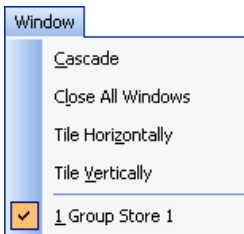
Hide disabled...

sensors / digital inputs which are disabled in elproLOG CONFIG, are not represented in the in the elproLOG MONITOR main screen.

Show alarm at the top

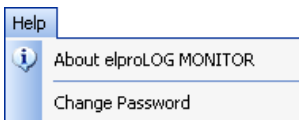
Alarm conditions are shown on top of the list and not in a simple alphabetic order.

Window



Function to organize your screen

Help



About elproLOG MONITOR

Detailed information about the installed software version

Change Password

The application elproLOG USER is required for password protection

4.2 Icons



Acoustic Alarm

Switches the local (pc), acoustic alarm off



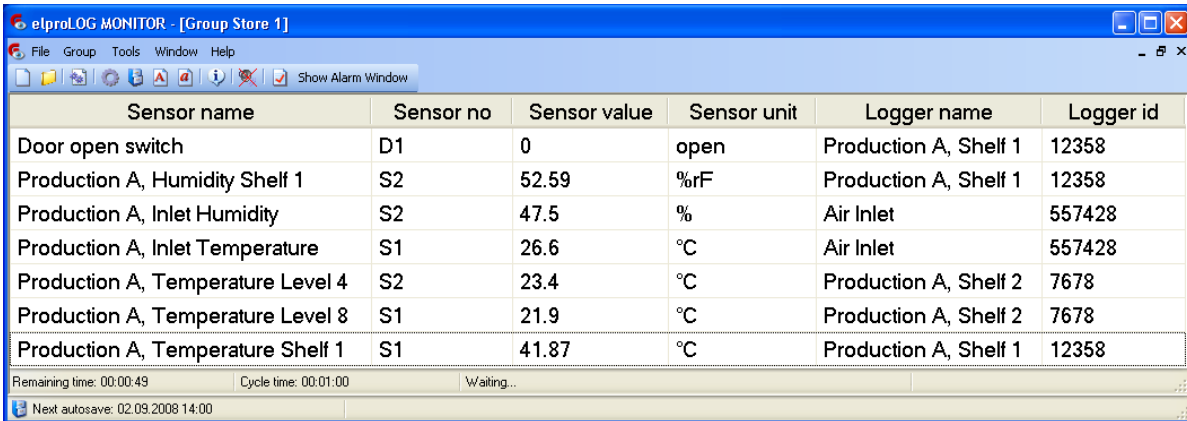
Alarm Window

Used to open the alarm window

This icon is going to blink red, as soon as an alarm has been released. It stays active till the alarm has been confirmed even the alarm has vanished

5. Data Representation

Sensor based representation



Sensor name	Sensor no	Sensor value	Sensor unit	Logger name	Logger id
Door open switch	D1	0	open	Production A, Shelf 1	12358
Production A, Humidity Shelf 1	S2	52.59	%rF	Production A, Shelf 1	12358
Production A, Inlet Humidity	S2	47.5	%	Air Inlet	557428
Production A, Inlet Temperature	S1	26.6	°C	Air Inlet	557428
Production A, Temperature Level 4	S2	23.4	°C	Production A, Shelf 2	7678
Production A, Temperature Level 8	S1	21.9	°C	Production A, Shelf 2	7678
Production A, Temperature Shelf 1	S1	41.87	°C	Production A, Shelf 1	12358

Remaining time: 00:00:49 Cycle time: 00:01:00 Waiting...
Next autosave: 02.09.2008 14:00

Logger based representation



Logger	S1	S2	S3	S4	S5	S6	S7	S8	D1	D2
▶ Air Inlet ID: 557428	Production A, I 26.8 °C	Production A, I 46.3 %								
Production A, Shelf 1 ID: 12358	Production A, 41.91 °C	Production A, 52.22 %rF							Door open switch 0 open	
Production A, Shelf 2 ID: 7678	Production A, 21.8 °C	Production A, T 23.4 °C								

Remaining time: 00:00:26 Cycle time: 00:01:00 Waiting...
Next autosave: 02.09.2008 14:00

- Cycle time** Time between two scans
- Remaining time** Time left till the next scan
- Next autosave** Date and time till the next autosave

Revision History

Author	Date	Version	Description
A. Gubler	30. 07.2008	--	1st edition; repaces SM3401E

Head Office:
ELPRO-BUCHS AG
Langäulistrasse 62
CH-9471 Buchs
Switzerland
email: swiss@elpro.com



ELPRO-BUCHS SA
Route de Grandvaux 26
CH-1096 Cully
Suisse
email: swiss@elpro.com

ELPRO MESSTECHNIK GmbH
Baumwasenstrasse 20/1
D-73614 Schorndorf
Deutschland
email: brd@elpro.com



ELPRO UK Ltd.
Unit 1, Allen's Yard
Nyton Road, Aldingbourne
GB - PO20 3UA Chichester
West Sussex
Great Britain
email: uk@elpro.com

ELPRO Services Inc.
P.O. Box 727
210 Mill Creek Road
US-Marietta, Ohio 45750
email: usa@elpro.com

www.elpro.com