

Q-tag2 - Alarm Monitor



Q-tag2, Temperature Alarm Monitor

Temperature monitoring for transportation

Preprogrammed by manufacturer to customer specs.

Autonomous, small device for the temperature monitoring

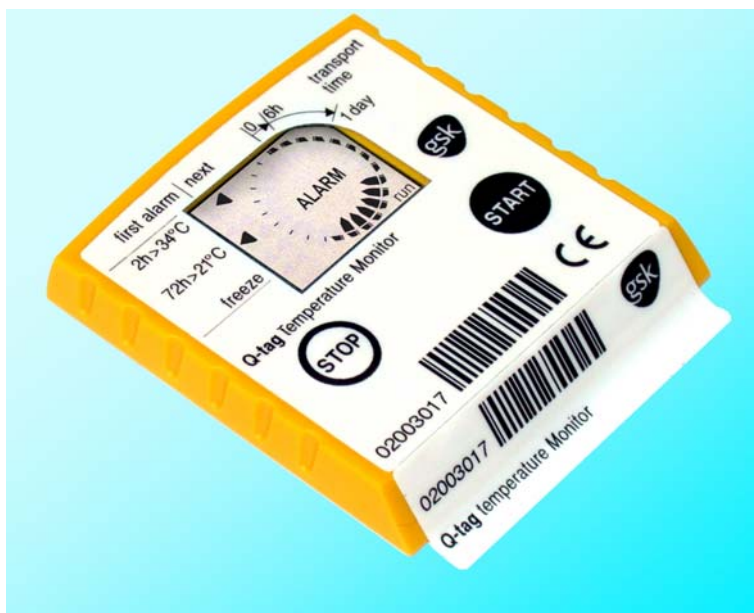
Simplest handling, clear identification, clear information

Precise measurement of the temperature

Immediate recognition of the exceeding of the alarm limits

Clear representation of alarm statuses

Battery life and shellife 2-3 years



Best Price / Performance Ratio

Q-tag2:

Size (wxhxd): 57x60x9.5mm

Handling and function

- Sender: Press start button and puts or sticks the device to the transport good
- Device measures about each minute the temperature and monitors the limit values
- With the exceeding of an alarm condition (time and temperature) = ALARM in the display
- Additional display: Which was the FIRST alarm? When was alarm exceeding limits?
- Recipient: Press stop key
- The display is considered as a document. The data will be displayed for 6 months to 1 year.

Additional functions:

- History mode: Each time segment can be displayed with the corresponding alarm status
- Validation mode: The device displays the current temperature range
- Photo-copyable: A photocopy of the device will shows the display and the label information
- Factory programming: 5 different alarm ranges and the time segment can be user-specific.

Q-tag2 - Alarm Monitor



Basic Function Information:

After the START key is pressed the running time is indicated with 24 elements on a circle. When pressing the STOP key or after completing the total run time, the display freezes and shows OK or ALARM. The display indicates when and what alarm condition has been violated.

Time ranges:

Customer specific programmed total run time between 1 day and 48 days gives displayable time segments from 1 hour to 48 hours.

Example:

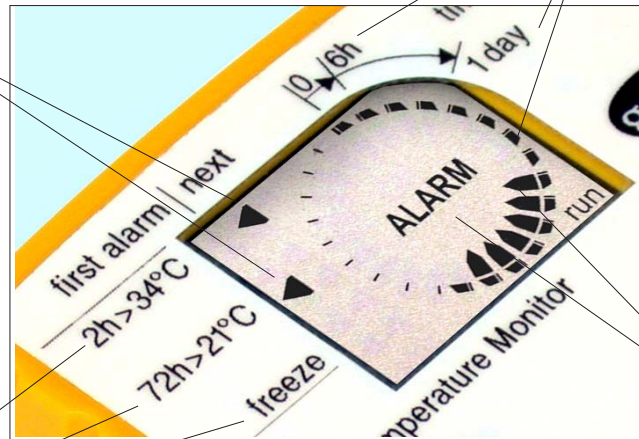
Total run time = 6 days

Time / Segment = 6 hours

Measuring interval / alarm count: approx. 1 minute

First / next alarm:

The Indication of the violation of an alarm condition shows which condition did trigger the word Alarm



Alarm time indication:

The arrow together with the word ALARM indicates when, in which time segment after Start, the alarm conditions have been violated.

Alarm ranges:

Customer specific programmable ranges with individual time delay (cummulated or singel event):

Example:

< 2°C	immediate freeze alarm
2°-8°C	unlimited time without alarm
8° - 21°C	Alarm after 72 hours
21° - 34°C	Alarm after 2 hours

Start delay time:

Normally a start delay time of 20 minutes to max. 4 hours is programmed. This allows to get the device precooled to the save temperature together with the goods without triggering an alarm.



Q-tag2 - Alarm Monitor



For the save shipment of temperature sensitive material:

Since 1999 Q-tag1 is used by big pharmaceutical companies in large quantities. Now the system has been improved to Q-tag2, for better readability of the display information. Moreover it can be photocopied after arrival. This feature is important to be able to send a fast request to the sender of the shipment in case of an ALARM.



Add a Q-tag to each box

Take a Q-tag and press the start button
The start delay will give you time to pack it together
with the goods.
Place the packages in the cold store waiting for the
shipment.

Q-tag:

- **save**
- **small**
- **unique**
- **most easy to use**
- **lowest price**



Keep part of the label in your record

Sticker with double ID number:
The Q-tag label is made in two parts.
One part can be pulled off before
placing into the box. This is kept by the
sender. It can be stiked onto the
documents remaining by the sender.

Save deliveries to worldwide destinations:

The experiance during the last two years of operation has proved Q-tag to be the most easiest and safe way to monitor temperature alarm conditions for the transportation of pharmaceutical products.

No PC evaluation needed, no wrong programming, no handling errors.

The device acts as the 'document' for the proof of the quality.

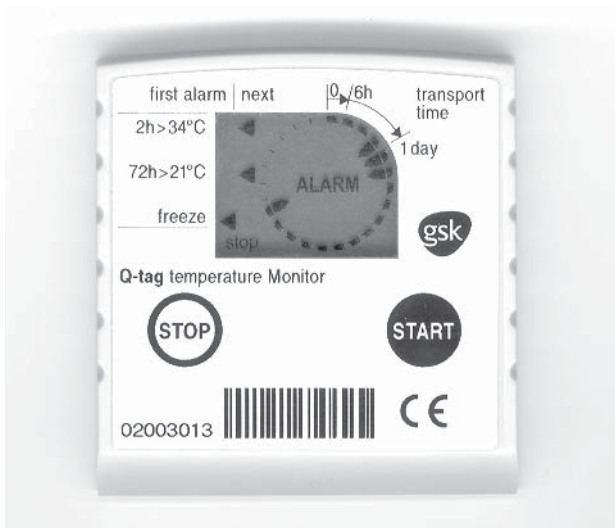


Q-tag2 - Alarm Monitor



Technical Data:

Operating temperature	-20°C... 55°C. Correct measurements are guaranteed in this range.
Display readability	-10°C...50°C. Below -10°C the quality of the black/white contrast deteriorates; flashing slows down and the display can disappear. Above 50°C, the contrast becomes too severe and the whole display may turn dark. The above conditions can be reversed completely when the display is returned to the permitted temperature range. No measurement results or time information is lost.
Time measurement	Accuracy is ± 10 sec/day
Temperature measurement	Accuracy is $\pm 0.5^\circ\text{C}$
Shelf life	3 Years
Storage temperature	-30°C...70°C. Relevant for unit transport to customer, storage at customer site and for the actual measurement cycle. Ambient temperature is recommended for storage.
Data storage	6-12 months after activation of STOP button. Use photo-copy feature for save data storage.
Serial numbers	Each unit has a label with the part number (consecutive unit numbering) and relevant barcode. A second detachable section of this label is used as tag for the shipping paper.
Recycling	The unit can not be manipulated, i.e. programmed or measured data can only be altered when the casing is destroyed. Units that are returned to suppliers will be disposed of in a manner that is not harmful to the environment or they will be recycled.



Scale 1:1
Photocopy of Q-tag2 after arrival

ELPRO-BUCHSAG

CH-9471 Buchs SG

Tel. 081 750 03 11

Fax 081 750 03 17

ELPRO Messtechnik GmbH

D-73614 Schorndorf

Tel. 07181 979480

Fax 07181 979485



QZ2001Ea 10.2002